



Orion

Outdoor Pure Cube

Assembly Instructions



Requirements:

2 People (recommended)
 Rubber Mallet
 Carpenters Level
 Carpenters Square
 Tape Measure
 Cordless Drill
 Phillips & Robertson Drill Bits
 2" hole Saw

Staple Gun
 1/4" Nut Driver
 Step Ladder
 Utility Knife
 Drill Bit set
 4mm Hex Bit
 Saw
 13mm Socket

You Tube

[Click here or scan the QR code to view the assembly video.](#)

Manufactured by:

 **leisurecraft**
 — BUILDING LUXURY —

tel: 888-923-9813 | info@leisurecraft.com | [web: www.leisurecraft.com](http://www.leisurecraft.com)





Orion Outdoor Pure Cube Assembly Instructions

Please note that metal siding may have sharp edges!

It is recommended to wear personal protective equipment including gloves and safety glasses while handling the metal siding!



Index

Base Preparation

Sauna Assembly

Front Glass Window installation

Roof Assembly

Metal Siding Installation

Bench Assembly

Inside Trim Installation\

Outside Trim Installation

Floor Model Electric Heater Installation

Care & Maintenance

Warranty

Manufactured by:



tel: 888-923-9813 | info@leisurecraft.com | web: www.leisurecraft.com

Orion Outdoor Pure Cube Assembly Instructions

Sauna Base Preparation

Make sure the base for your sauna is level with a slight slope to the back for drainage.

A solid base for your sauna is recommended and can be made from any of the following.



Concrete Pad



Wood Deck



Crushed Stone



Patio Stone/Paver Blocks

It is recommended to build a base larger than required to provide a sitting area for cooling off during your sauna session.

Manufactured by:



tel: 888-923-9813 | info@leisurecraft.com | web: www.leisurecraft.com

Orion

Outdoor Pure Cube Assembly Instructions

Sauna Assembly



Start the assembly of your Sauna by laying out the front and back floor joists.

The front and back joists are the shorter ones with the notch facing upwards.



Place the 2 side joists on either side.

Ensure the insulation supports are at the bottom and facing inwards.



Ensure the side joists are flush to the front and back joists and secure them together with 2 -2 ½" (64mm) screws.

Repeat for all 4 corners.



Measure 18 ¾" (48cm) from the side joist, which is the width of the insulation and secure one of the middle joists at both ends with 2" (51mm) screws.

The middle joist will have insulation supports on both sides.

Ensure the insulation supports are at the bottom.

Manufactured by:



tel: 888-923-9813 | info@leisurecraft.com | [web: www.leisurecraft.com](http://www.leisurecraft.com)

Orion

Outdoor Pure Cube Assembly Instructions

Sauna Assembly



Repeat on the opposite side with another middle joist ensuring the insulation supports are at the bottom.



Repeat with 2 more joists in the middle.

These joists will have an insulation support on 1 side only, ensure they are at the bottom and facing towards the outside of the sauna opposite each other.



Place the foam insulation in between the floor joists.

You may need to trim the ends to make them fit.



Ensure the base is square.

Manufactured by:



tel: 888-923-9813 | info@leisurecraft.com | web: www.leisurecraft.com

Orion

Outdoor Pure Cube Assembly Instructions

Sauna Assembly



Temporarily place a floorboard in the middle of the base and secure at each end with a 1 ½" (38mm) screw.

This will prevent the joists from shifting as you finish the floor.

(This will be removed later)



Begin placing the floorboards starting at the front of the sauna with the flat side of the floorboard tight into the notch of the front joist.

Secure each end with a 1 ½" (38mm) screw at each end and finishing nails or 1 ¼" (32mm) staples through the tongue into the middle joists.



Continue to add the floorboards tapping tightly into each other.

When you reach the middle floorboard, Remove it and then continue placing the floorboards until you reach the rear of the sauna.



Once you get to 50" (127cm) from the rear of the sauna, you can place a screw in the face of the floorboards where each of the joists are as they will be hidden by the benches and will not be seen.

Manufactured by:



tel: 888-923-9813 | info@leisurecraft.com | web: www.leisurecraft.com

Orion

Outdoor Pure Cube Assembly Instructions

Sauna Assembly



Finish the floor by adding the small finisher piece to the last full-size floorboard and tap both together, then secure with 1 ½" (38mm) screws.



Place one of the 30" (76cm) wall panels onto the back side corner of the base with the siding facing inwards and ensure it is flush with the outer edge.

Secure to the base with 3 – 3 ½" (89mm) screws.



Place another wide panel next to this panel ensuring it is flush on the inside.

Secure it to the previous panel with 4 – 2 ½" (64mm) screws and into the floor with 2 – 3 ½" (89mm) screws.



Place a narrow 25 ¾" (65cm) panel onto the back of the sauna.

Ensure it is flush with the back of the base and the side panel.

Secure it to the side panel with 4 – 2 ½" (64mm) screws and into the floor with 2 – 3 ½" (89mm) screws.

Manufactured by:



tel: 888-923-9813 | info@leisurecraft.com | web: www.leisurecraft.com

Orion

Outdoor Pure Cube Assembly Instructions

Sauna Assembly



Secure another 2 narrow wall panels onto the back in the same manner ensuring they are flush on the inside with the previous panel.



Place one of the 30" (76cm) wall panels onto the other side of the sauna with the siding facing inwards and ensure it is flush with the back and side edges.

Secure it to the previous panel with 4 – 2 ½" (64mm) screws and into the floor with 2 – 3 ½" (89mm) screws.



Place another wide panel next to the previous panel.

Secure it to the previous panel with 4 – 2 ½" (64mm) screws and into the floor with 2 – 3 ½" (89mm) screws.



Place a glass panel next to the wide panel ensuring the pre-drilled holes are on the outside.

Manufactured by:



tel: 888-923-9813 | info@leisurecraft.com | web: www.leisurecraft.com

Orion

Outdoor Pure Cube Assembly Instructions

Sauna Assembly



Use a 5/32" drill bit to predrill holes into the wall panels and then secure the glass panel to the wall in the predrilled holes using the 4 connector lag screws.



Place the door panel on a corner post ensuring it is flush.

Note that once mounted, the post will be at the front of the sauna and the door hinges on the outside so make sure the door opens in your preferred direction before drilling the mounting holes in the next step.



Using a 3/4" (19mm) drill bit to drill 4 evenly spaced mounting holes halfway through the door panel on the post side.



Again, Use a 5/32" drill bit to predrill holes into the corner post through the holes you just drilled and then secure the glass door panel to the post using 4 connector lag screws.

Manufactured by:



tel: 888-923-9813 | info@leisurecraft.com | web: www.leisurecraft.com

Orion

Outdoor Pure Cube Assembly Instructions

Sauna Assembly



Place the door panel next to the glass panel ensuring the hinges are to the outside.

Use the pre-drilled holes on the glass panel to pre-drill 5/32" holes into the door panel.

Secure the glass panel to the door panel using 4 connector lag screws.



Place a glass panel on the opposite side of the sauna securing it to the wall panel in the same manner as the other glass panel ensuring you pre-drill holes from the panel into the wall panel.



Secure the last glass panel to the remaining corner post ensuring it is flush.

Use a 5/32" drill bit to predrill holes into the post and then secure the glass panel to the post in the predrilled holes using the 4 connector lag screws.



Place the glass panel next to the previous glass panel and secure with the provided connector lag bolts and nuts through the pre-drilled holes.

Manufactured by:



tel: 888-923-9813 | info@leisurecraft.com | web: www.leisurecraft.com

Orion

Outdoor Pure Cube Assembly Instructions

Front Window Installation



WARNING: The Front Glass Panel is Heavy.

Use the Provided Panel Handling lifting devices and ensure you have at least to people to carry the panel!



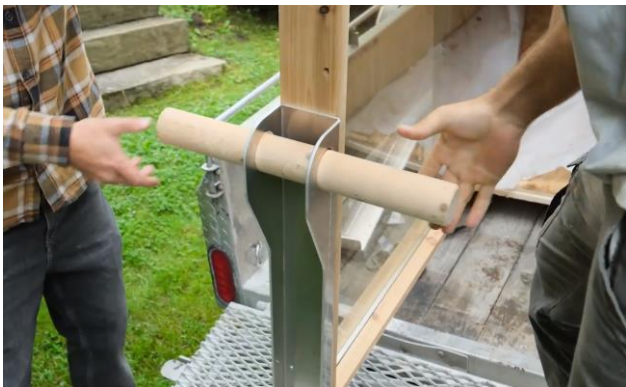
Locate the wall panel handling rigger set.

This will include 2 aluminum lifting riggers and 2 pieces of 2" (51mm) dowel.



Install the panel rigger bracket onto the bottom sides of the window panel with the provided screws.

The lip of the panel rigger should be tight to the bottom side of the panel.



Slide the dowel through the hole in the rigger so it is even on both sides.

Manufactured by:



tel: 888-923-9813 | info@leisurecraft.com | web: www.leisurecraft.com

Orion

Outdoor Pure Cube Assembly Instructions

Front Window Installation



Carefully carry the glass panel to the front of the sauna.



When you get the glass panel close to the front wall you can remove the riggers.



Insert the front window panel and ensure it is flush to the front of the floor and the side wall panels.

It is recommended to have a helper on the inside of the sauna to prevent the glass window from falling inward.



Use a rubber mallet to finesse window until it is flush by tapping on the wood of the panel. (if needed)

Manufactured by:

Orion

Outdoor Pure Cube Assembly Instructions



Use a 5/32" drill bit to predrill holes into the wall panels.



Secure the glass panel to the side wall panel with the provided lag screws ensuring the glass panel is flush.



Repeat on the opposite side.



Tap the side walls until they are flush with the base of the sauna and then secure each of the glass panels to the base using 2 - 2 1/2" (64mm) screws to the outside floor joists.

Manufactured by:



tel: 888-923-9813 | info@leisurecraft.com | web: www.leisurecraft.com

Orion

Outdoor Pure Cube Assembly Instructions



Secure the front glass panel with 3 - 2 ½" (64mm) screws to the front floor joist.

Manufactured by:



tel: 888-923-9813 | info@leisurecraft.com | web: www.leisurecraft.com

Orion

Outdoor Pure Cube Assembly Instructions

Roof Assembly



Slide the first roof panel onto the top of the sauna ensuring it is flush to the front and side panels.



Use a 5/32" drill bit to predrill 2 holes from the glass panel into the roof panel.

Secure with 3 1/2" (89mm) screws.



Repeat for the side wall panels ensuring the roof panel is flush to the side walls.



Repeat the above steps for the 2nd roof panel.

Ensure the insulation blocks are already installed in the roof panels

Manufactured by:



tel: 888-923-9813 | info@leisurecraft.com | web: www.leisurecraft.com

Orion

Outdoor Pure Cube Assembly Instructions

Roof Assembly



Place the first sheet of plywood onto the roof of the sauna.



Ensure the plywood is flush to the front and sides of the sauna and secure with 1 ¼" (32mm) screws or staples.



Repeat for the second sheet of plywood.



Repeat for the last smaller sheet of plywood.

Manufactured by:



tel: 888-923-9813 | info@leisurecraft.com | web: www.leisurecraft.com

Orion

Outdoor Pure Cube Assembly Instructions

Roof Assembly



Ensure the roof panels are square to the front corner of the sauna and secure the panels to the roof panels with 5 - 2 ½" (64mm) screws on the front glass panel.

Repeat for the panels on each side of the sauna with 2 - 2 ½" (64mm) screws per glass panel and 2 - 3 ½" (89mm) screws per wood panel.



Place one of the top side nosing pieces and ensure it is ½" (13mm) above the bottom of the upper glass panel studs and 1" (25mm) above the bottom of the upper wood panel studs.

Secure with 5 - 2 ½" (64mm) screws.



Repeat on the opposite side with the other side nosing piece..



Repeat with the front nosing piece ensuring it is flush to the edge of the side nosing.

Secure the front nosing with 5 - 2 ½" (64mm) screws.

Manufactured by:



tel: 888-923-9813 | info@leisurecraft.com | web: www.leisurecraft.com

Orion

Outdoor Pure Cube Assembly Instructions

Roof Assembly



Spread the rubber membrane out evenly over the roof of the sauna allowing it to drape over the sides.



Staple the membrane to the front and side nosings pulling it tight as you staple.

At the back of the sauna pull the membrane tight and secure with staples to the underside of the wall panels.



Cut off the excess membrane even with the front and side nosing pieces adding more staples as needed to get a tight fit.

Manufactured by:



tel: 888-923-9813 | info@leisurecraft.com | web: www.leisurecraft.com

Orion

Outdoor Pure Cube Assembly Instructions

Metal Siding & Trim Installation



To start the installation of the metal trim, place a side metal trim piece over the side nosing and secure with 6 black screws on the top and 3 centered on the bottom of the metal trim.

Repeat on opposite side.



Place the front metal trim piece over the front nosing.

Secure with 11 black screws.



Place the insulation blocks into the wall panels.



Place the first wood back trim piece on one side of the sauna back wall tight to the metal trim.

Ensure there is a 1" (25mm) overhang to the outside and secure with 6 - 2 ½" (64mm) screws.

Repeat on opposite side.

Manufactured by:



tel: 888-923-9813 | info@leisurecraft.com | web: www.leisurecraft.com

Orion

Outdoor Pure Cube Assembly Instructions

Metal Siding & Trim Installation



Place a metal trim piece over the back siding piece and secure with 3 of the provided black screws.

Repeat on opposite side.



Place the side "J" piece next to the side trim and secure with 3 of the provided screws.

Repeat on opposite side of back wall.



Install the bottom trim piece ensuring it is snug between the 2 side "j" trim pieces securing with 4 of the provided screws.

You can use a piece of the metal siding to help get the correct location of the bottom trim.



Place the first piece of metal siding by sliding it into the "j" side piece and then securing with 3 - 1" (25mm) screws in the cut-out slots ensuring each panel locks into the previous panel.

Manufactured by:

Orion

Outdoor Pure Cube Assembly Instructions

Metal Siding & Trim Installation



Repeat this process for the remaining back wall siding pieces.



When you reach the other side of the back wall, use the thin finisher panel to complete.

Secure it with 3 of the provided black screws.



On the door side of the sauna, Place a top "J" piece between the trim piece and the glass panel and secure with 3 of the provided black screws.



Place a tall side "J" piece on the glass panel and secure with a black screw at the top.

Repeat with a shorter side "J" piece next to the back nosing and secure with a black screw at the top.

Manufactured by:



tel: 888-923-9813 | info@leisurecraft.com | web: www.leisurecraft.com

Orion

Outdoor Pure Cube Assembly Instructions

Metal Siding & Trim Installation



Install the bottom trim piece ensuring it is snug between the 2 side “J” trim pieces securing with 4 of the provided screws.

You can use a piece of the metal siding to help get the correct location of the bottom trim.



Place the first piece of metal siding by sliding it into the “J” side piece on the glass panel side and then securing with 3 - 1” (25mm) silver screws in the cutout slots.



Repeat this process for the remaining metal siding pieces.

When you reach the 2nd last panel, Install the panel with the vent hole cut-out on the top.



The last panel will be a thinner finisher panel to complete.

Ensure it is locked into the previous panel and secure with 3 of the provided black screws.

Manufactured by:



tel: 888-923-9813 | info@leisurecraft.com | web: www.leisurecraft.com

Orion

Outdoor Pure Cube Assembly Instructions

Metal Siding & Trim Installation



Repeat on the opposite side of the sauna except the vent hole will be to the bottom of the panel next to the glass panel.



Install the door handle by placing the provided 2" (50mm) lag screws through the inner handle (short) into the outer handle (longer)

Use the hex key to snug up, do not tighten all the way.



Ensure the outer handle lines up with the magnetic catch on the door frame and then tighten the lag screws completely.



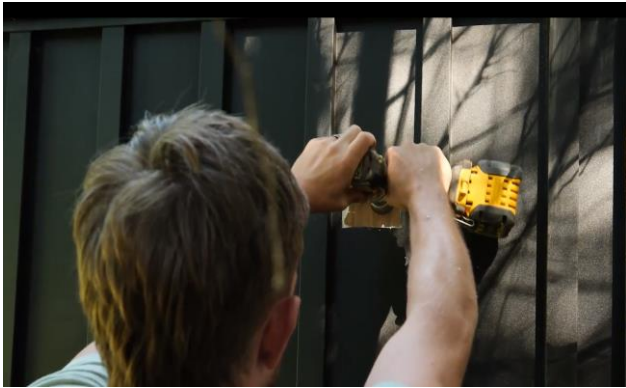
Using a utility knife, remove the insulation from the upper vent hole.

Manufactured by:

Orion

Outdoor Pure Cube Assembly Instructions

Metal Siding & Trim Installation

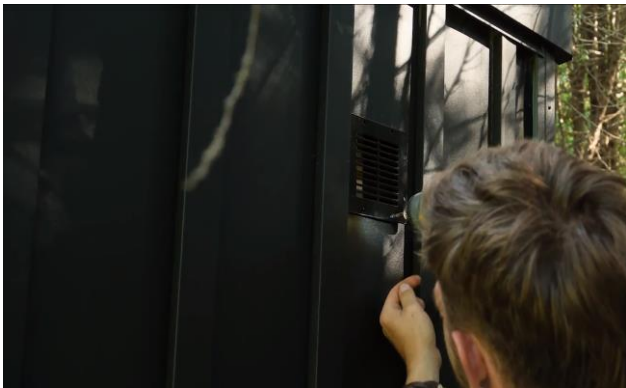


Drill a 2" (51mm) hole in the center of the cut out.

Only drill have way to prevent splintering on the inside of the sauna.



Finish drilling the hole from the inside for a cleaner look.



Install the vent and secure with the provided screws.



Repeat the process for removing the insulation and installing the vent for the lower vent hole.

Manufactured by:

Orion

Outdoor Pure Cube Assembly Instructions

Bench Assembly



To start the assembly of the benches, bring in the large top bench and place it against the back wall ensuring the curved front of the bench is facing upwards.



Place one of the bench supports flush to the back of the bench with the bottom seat facing up and secure the support to the bench with 2 - 2 ½" (64mm) screws per support.



Repeat with the remaining supports.



Repeat with the lower bench ensuring the curved front of the bench is facing upwards.

Secure the support to the bench with 2 - 2 ½" (64mm) screws per support ensuring the support is square to the bench.

Manufactured by:

Orion

Outdoor Pure Cube Assembly Instructions

Bench Assembly



Flip the bench upright and place it tight against the back wall of the sauna.



Ensure the bench is tight to the back wall then secure with 2 - 2 ½" (64mm) screws in the back support and 2 - 2 ½" (64mm) screws in the floor support on each bracket.



Place the large backrest 10" (25cm) to the bottom of the 2nd slat above the bench and secure with 2 ½" (64mm) screws into each support.

Screw between the slats of the support to hide the screws.



Place the upper bench enclosure in place and secure with 2 - 1 ½" (38mm) screws into each support.

Repeat for bottom enclosure.

Screw between the slats of the support to make the screws less visible.

Manufactured by:

Orion

Outdoor Pure Cube Assembly Instructions

Bench Assembly



Place a top trim on the door side of the sauna and secure with 1 ¼" (32mm) staples or finishing nails.



Place a wide trim piece over the seam between the door panel and the glass panel and with 1 ¼" (32mm) staples or finishing nails.



Place a notched trim piece over the seam between the glass panel and the wood panel then secure with 1 ¼" (32mm) staples or finishing nails.

Manufactured by:



tel: 888-923-9813 | info@leisurecraft.com | web: www.leisurecraft.com

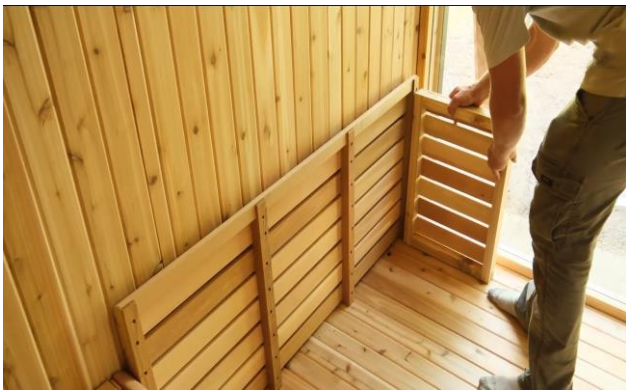
Orion

Outdoor Pure Cube Assembly Instructions

Bench Assembly



Place the side wall bench against the side wall ensuring the curved front of the bench is facing upwards.



Secure the slotted bench support to the bench seat with 2 - 2 ½" (64mm) screws.

Repeat for the 3 remaining bench supports.



Flip the bench upright and place it tight against the side wall of the sauna.



Ensure the bench is tight to the side wall then secure with 2 - 2 ½" (64mm) screws in the back support and 2 - 2 ½" (64mm) screws in the floor support on each bracket.

Manufactured by:

Orion

Outdoor Pure Cube Assembly Instructions

Bench Assembly



Place the side wall bench enclosure in place and secure with 2 - 1 ½" (38mm) screws into each support.

Screw between the slats of the enclosure to make the screws less visible.



Place the side wall backrest so it is aligned with the top bench on the back and secure with 2 ½" (64mm) screws into each support.

Screw between the slats of the support to hide the screws.



Place the vent guard over the bottom vent and secure with 6 - 1 ½" (38mm) screws.



Place a notched trim piece over the seam between the glass panel and the wood panel then secure with 1 ¼" (32mm) staples or finishing nails.

Manufactured by:

Orion

Outdoor Pure Cube Assembly Instructions

Inside Trim Installation



Measure the distance between the side walls at the seam above the glass wall and the roof.

Transfer this measurement to a piece of the inside corner trim and cut.



Secure the corner trim with 1 ¼" (32mm) staples or finishing nails.

Repeat for the back wall.



Place a top trim on the other side of the sauna and secure with 1 ¼" (32mm) staples or finishing nails.

Place a wide trim piece over the seam between the glass panels and secure with 1 ¼" (32mm) staples or finishing nails.



Repeat the above steps for the corners on the front wall and the trim piece above the wood panels on the side and back walls.

Manufactured by:

Orion

Outdoor Pure Cube Assembly Instructions

Inside Trim Installation



Measure the distance between the roof and the top of the backrest and from the backrest to the bench.

Cut accordingly and secure with staples or finishing nails.



Install the crown molding over the seam between the 2 roof panels.



Measure the remaining gap and cut a piece to fit.

Secure it with staples or finishing nails.

Manufactured by:

Orion

Outdoor Pure Cube Assembly Instructions



Center the bottom vent support under the hole, ensure it is level and secure it with 3 – 1 ½" (38mm) screws



Place the cedar slider cover onto the bottom support then put the top vent support on top, ensure that the cover can slide back and forth.

Secure with 3 – 1 ½" (38mm) screws.

Manufactured by:

Orion

Outdoor Pure Cube Assembly Instructions

Outside Trim Installation



On the outside of the sauna, place the thinner trim pieces over the seam on either side of the door panel.

Secure with 1 ¼" (32mm) staples or finishing nails.



Place the wider trim pieces over the seams on either side of the front glass panel and secure with 1 ¼" (32mm) staples or finishing nails.



Repeat on the other side of the sauna.

Manufactured by:

Orion

Outdoor Pure Cube Assembly Instructions

Floor Model Electric Heater Installation

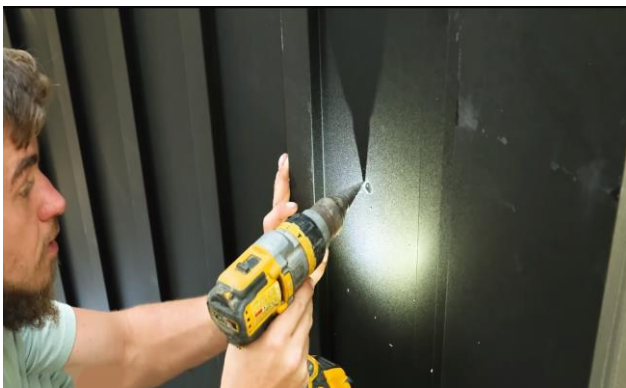


To start the installation of the floor model heater, drill a ½" (13mm) hole beside the door at the desired height where the control panel will be mounted.

Drill the hole halfway through and finish from the inside of the sauna for a cleaner look.

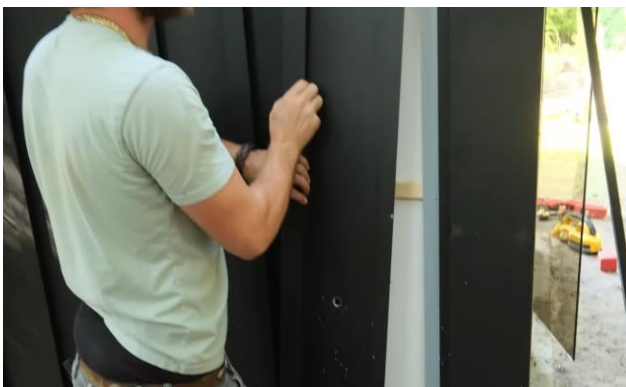


Secure the control panel housing over the hole with the provided screws ensuring it is level.



Drill a hole in the center of the 1st piece of metal siding on the back corner of the sauna to fit the plug for the wires.

This should be under the top bench to hide the wires coming into the sauna. (Approx. 28"- 30" (71-76cm) from the ground)



Remove the piece of metal siding to finish drilling the hole through the sauna wall.

Manufactured by:

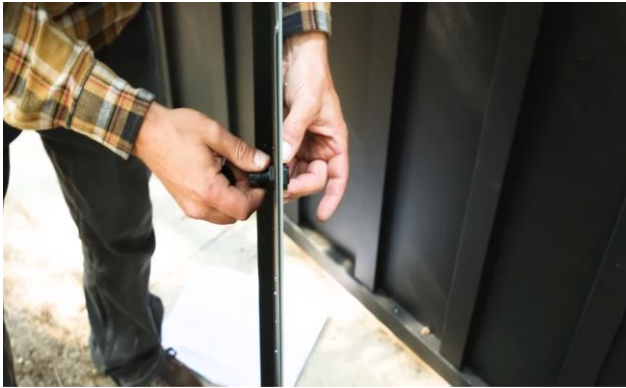


tel: 888-923-9813 | info@leisurecraft.com | web: www.leisurecraft.com

Orion

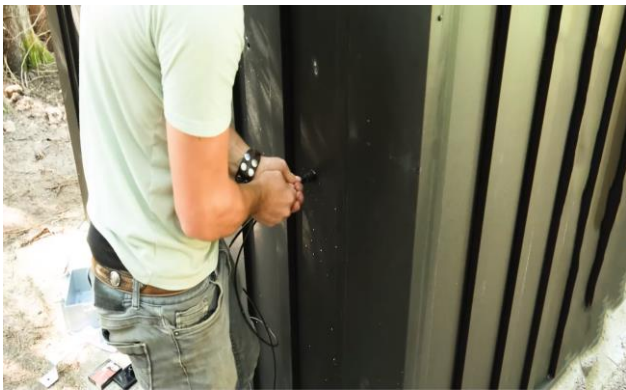
Outdoor Pure Cube Assembly Instructions

Floor Model Electric Heater Installation



With the piece of metal siding removed, insert the plug through the hole and tighten with the plastic nut on the back of the siding.

Reinstall the metal siding piece.



Feed the 2 wires through the plug, leaving a couple feed for the electrician to finish the hook up.



Install the lock cap over the wires and snug up onto the plug.



On the inside of the sauna, remove the upper bench enclosure and slide the wires along the wall under the lower bench and front enclosure to the front of the sauna where the heater and control panel will be located.

Manufactured by:



tel: 888-923-9813 | info@leisurecraft.com | web: www.leisurecraft.com

Orion

Outdoor Pure Cube Assembly Instructions

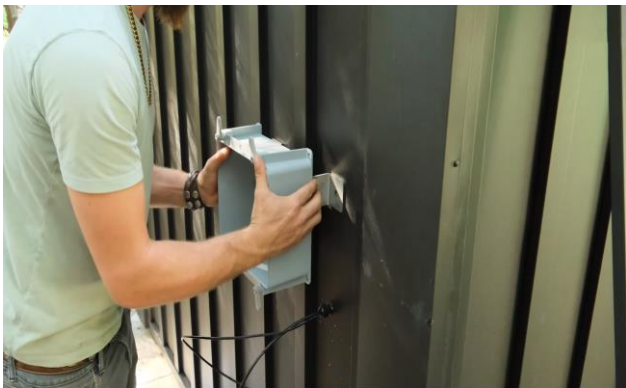
Floor Model Electric Heater Installation



Place the support bracket for the electrical box and drill out the mounting holes.

Ensure it is level and aligned with the stud in the wall.

Do not fasten the box at this point.



Position the electrical box on the bracket in your desired position.



Flip over the box and bracket and drill out the mounting holes from the bracket into the electrical box.

Secure with the provided bolt & nuts.



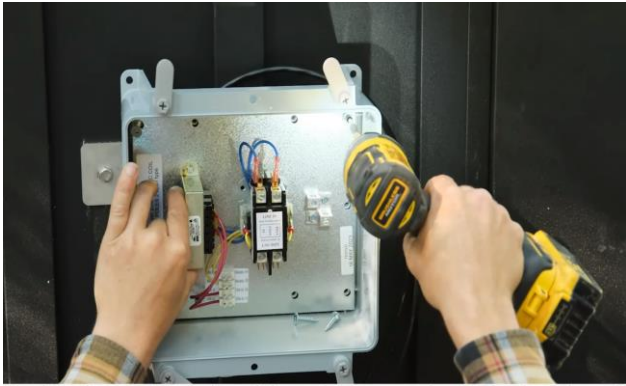
Mount the assembly to the wall with the provided lag screws.

Manufactured by:

Orion

Outdoor Pure Cube Assembly Instructions

Floor Model Electric Heater Installation



Secure the electrical components in the box and place on the cover.

Leave the final wiring for a licenced electrician to complete.



Place the upper bench enclosure in place and secure with 2 - 1 ½" (38mm) screws into each support.

Screw between the slats of the support to make the screws less visible.



Measure the length of the wall beside the door and cut one of the wire cover trim pieces on a 45° angle at that measurement.



Measure the distance from the front of the lower bench to the trim piece and cut the other wire cover trim piece on a 45° angle at the measurement.

Manufactured by:

Orion

Outdoor Pure Cube Assembly Instructions

Floor Model Electric Heater Installation



Place the wires into the groove of the trim.

Fasten the trim using 1 ¼" (32mm) staples or finishing nails being careful not to hit the wires inside the trim.



Feed the 4-wire bundle through the hole in the wall & control panel housing.



Place the 4-wire bundle into the groove of the wall trim and the 2-wire bundle out the bottom.

Leave the 2-wire bundle for a qualified electrician to connect to the heater.

Fasten the wall trim using 1 ½" (38mm) screws being careful not to hit the wires inside the trim.



Install the temperature sensor on the wall above the heater 2 ½" (64mm) down from the roof trim with the provided 1" (25mm) screw.

Manufactured by:

Orion

Outdoor Pure Cube Assembly Instructions

Floor Model Electric Heater Installation



Remove the protective film from the temperature sensor cover and install over the sensor with 4 of the provided 1" (25mm) screws.

The 2 wires will need to be connected to the control panel by a qualified electrician.



Secure the control panel to the housing block with the provided screws.

Leave the wires for a licensed or qualified electrician to connect.



Remove the protective film from the heater.



Place the heater in the desired location.

It must be a minimum of 3 ½" (89mm) away from all walls.

Manufactured by:



tel: 888-923-9813 | info@leisurecraft.com | web: www.leisurecraft.com

Orion

Outdoor Pure Cube Assembly Instructions

Floor Model Electric Heater Installation



Secure the provided "feet" to the floor with the provided 1" (25mm) screws by sliding them under the heater and then pulling them back tight to the inside.



Fill the heater with rocks.

Ensure that there is sufficient airflow between the rocks to allow heat to escape the air-flow system avoiding unwanted high-limit issues.

Rocks should be rinsed before use in order to avoid odour and dust.

Sauna rocks should be reviewed after 12 months of use. Removing worn or broken stones and replacing with new sauna stones

Larger rocks should be placed on the bottom of the heater while saving the smaller rocks for the top 9 inches of the heater

Rocks should be placed until they sit to the top of the heater ensuring that the element protector is fully covered or encased with rocks.

Manufactured by:

MAINTAINING YOUR SAUNA AFTER INSTALLATION

Interior

It is recommended to vacuum or sweep out the inside of your sauna frequently to remove dirt and other debris.

Under normal conditions, a slight wash of the floor and benches with warm soapy water several times a year will maintain its cleanliness. You can use a sheet of fine grit sandpaper or a low pressure wash to remove more stubborn stains or for a deeper cleaning of the interior of your sauna.

Never use ammonia or harsh cleaners as they can turn the wood gray.

Exterior

Depending on the humidity and weather conditions in your area, the cedar will either shrink or expand based on the amount of moisture absorption. The desired effect is to have the cedar expand into the bands therefore making the sauna staves much tighter.

Over time the lumber will weather naturally as a result of sun and rain, it will change into a weathered grey colour. This natural weathering will not harm the wood or impair the sauna's performance.

If you wish to retain the natural color of your Dundalk Leisurecraft Sauna, there are many cedar stains on the market and almost as many opinions as to which is best.

We encourage you to rely on your own research and referrals.

Recommended Stains Include:

Behr Premium Semi-Transparent Waterproofing Stain & Sealer

Sikkens Proluxe Cetol SRD Translucent Stain

<https://www.realcedar.com/outdoor/finishing-choices/>

Note: never treat the interior of the Sauna, and never apply paint or varnish to the exterior.



Water Seepage

Some minor water seeping into the sauna is expected and normal for an outdoor sauna.

If your sauna is properly installed, you should not have water dripping in but you should expect some water seepage, especially on the top and sides of the sauna.

This is due to the porous characteristics of the wood and to the ball-and-socket profile design of the staves. Water Seepage will not harm the sauna. The moisture will evaporate once you turn on the heater and the sauna heats up.

If the water marks are bothersome, they can be easily removed with a light sanding (80 or 100 grit)



HOW TO TAKE A SAUNA

1. Pre-heat your sauna to the desired temperature (usually between 80-100°C)
2. While it's warming up, take a nice hot shower.
3. Enter the pre-heated sauna, relax and allow your body to perspire in the soft dry heat. Do not throw water on the rocks during the first part of the session.
4. Cool off with a cold shower or a quick swim in a lake or pool.
5. Re-enter the sauna and sprinkle water on the rocks. This will increase humidity to assist in perspiration. Half a cup every 5 minutes should be enough. Too much water will just cool off the rocks and you'll get less steam.
6. After a 20-30 minute sauna, cool off in the shower or lake or pool.
7. Repeat this sauna/cold shower process as often as desired.
8. After each use, leave the door fully open for a few hours if possible so the wood can dry out.

**These are guidelines only. Enjoy your sauna in whichever way you desire.
Children must be supervised by an adult.**

WARRANTY

LeisureCraft warrants our saunas against defects in materials and workmanship under normal/residential use for a period of five (5) years, as applicable, from the date of receipt of the product by the original end-user consumer. This warranty does not apply to normal wear and tear and/or natural weather conditions. This warranty does not cover regular required maintenance of the sauna, (eg. Tightening bands on the barrels, cleaning or staining the sauna) refer to your sauna assembly manual for maintenance guidelines. This warranty does not cover misuse or negligence and the manufacturer and associated retailers are not liable for any injury or damage caused by the product. This warranty is a parts only warranty and any service or labor costs would not be considered as part of the 5 year warranty.

Purchaser Name: _____ Date: _____

Purchased From: _____

Manufactured by:



tel: 888-923-9813 | info@leisurecraft.com | web: www.leisurecraft.com